

2014+ Lower Vented Fairing Assembly Instructions



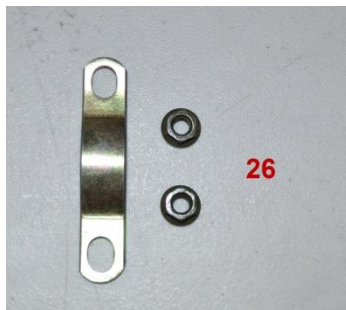
To assemble your lower vented fairings, these are the tools you will need.

- Standard Allen wrench set
- 6 inch extension
- 10MM socket
- T25 Torx bit
- Ratchet
- Phillips screwdriver



The plastic fairing parts consist of these 16 individual pieces

- A1 – Left outer fairing
- A2 – Right outer fairing
- B1 – Left glove box surround
- B2 – Right glove box surround
- C1 – Left inside panel
- C2 – Right inside panel
- D1 – Left vent bezel
- D2 – Right vent bezel
- E1 – Left glove box door
- E2 – Right glove box door
- F1 – Left inner glove box
- F2 – Right inner glove box
- G1 – Left fairing cap
- G2 – Right fairing cap
- H1 – Left bezel cover
- H2 – Right bezel cover
- I – Hardware bag



The Hardware bag (I) contains the following

- 1 – Mounting Hardware
- 2 – Plastic U-Bolts (X2)
- 3 – Vent doors (X2)
- 4 – Adhesive strips
- 5 – Rubber bump stops (X4)
- 6 – Short Allen head screws (X6)
- 7 – T25 Torx screws (X2)
- 8 – Plastic vent door hinge pins (X2)
- 9 – Springs (X2)
- 10 – Glove box door gear (X2)
- 11 – Speed nuts (X2)
- 12 – 10MM bolts (X2)
- 13 – Large Allen head screws (X4)
- 14 – Glove box door clips (X2)
- 15 – Small washers (X6)
- 16 – Phillips head self tapping screws (X6)
- 17 – Large washers (X4)

- 18 – Vent door actuator rod (X2)
- 19 – Vent lever sliders (X2)
- 20 – Vent lever knobs (X2)
- 21 – Vent door arms (X2)
- 22 – Locking washers (X4)
- 23 – Vent linkage (X2)
- 24 – Glove box door pins (X4)
- 25 – Brass inserts (X4)
- 26 – Mounting hardware and 2 nuts (X2)

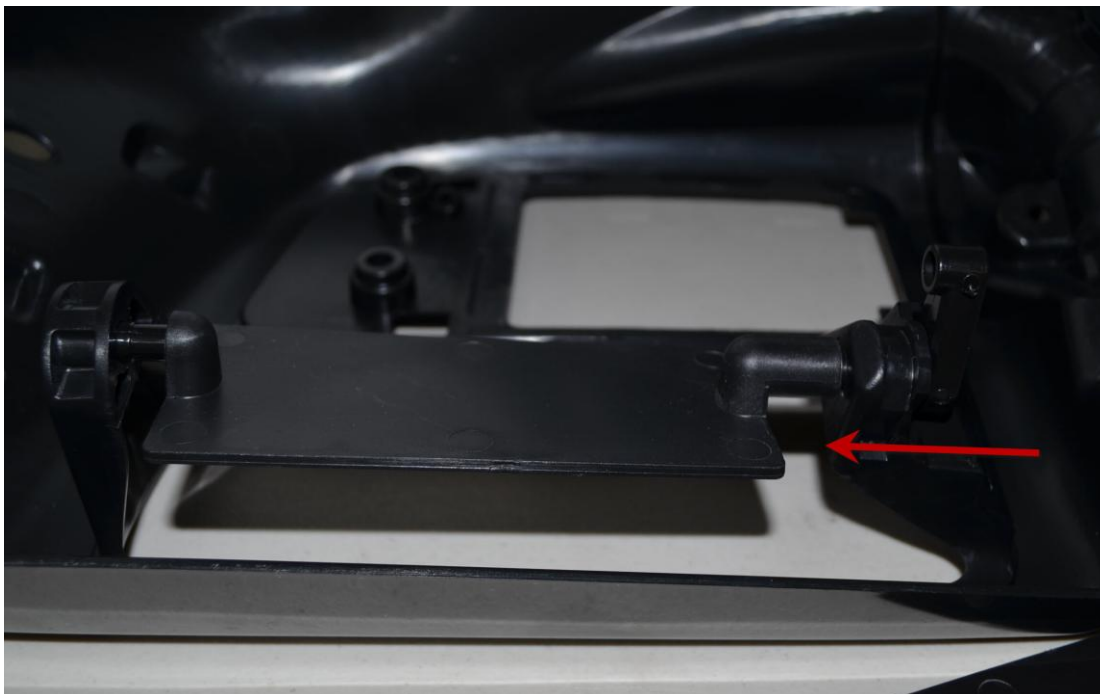
Step 1: Press in vent door actuator rods (18) to the vent door arms (21)



Step 2: Insert plastic vent door hinge pins (8) into the flat vent door tab on left or right outer fairing (A1 or A2)



Step 3: Install the vent door onto the plastic vent door hinge (8), and insert the assembled vent door arm and actuator rod (18 and 21) into the assembly through the offset vent door tab



Step 4: Insert the brass inserts (25) into the outer fairing (A1 or A2). These will not fit snugly in the holes, and cannot be pressed in by hand.



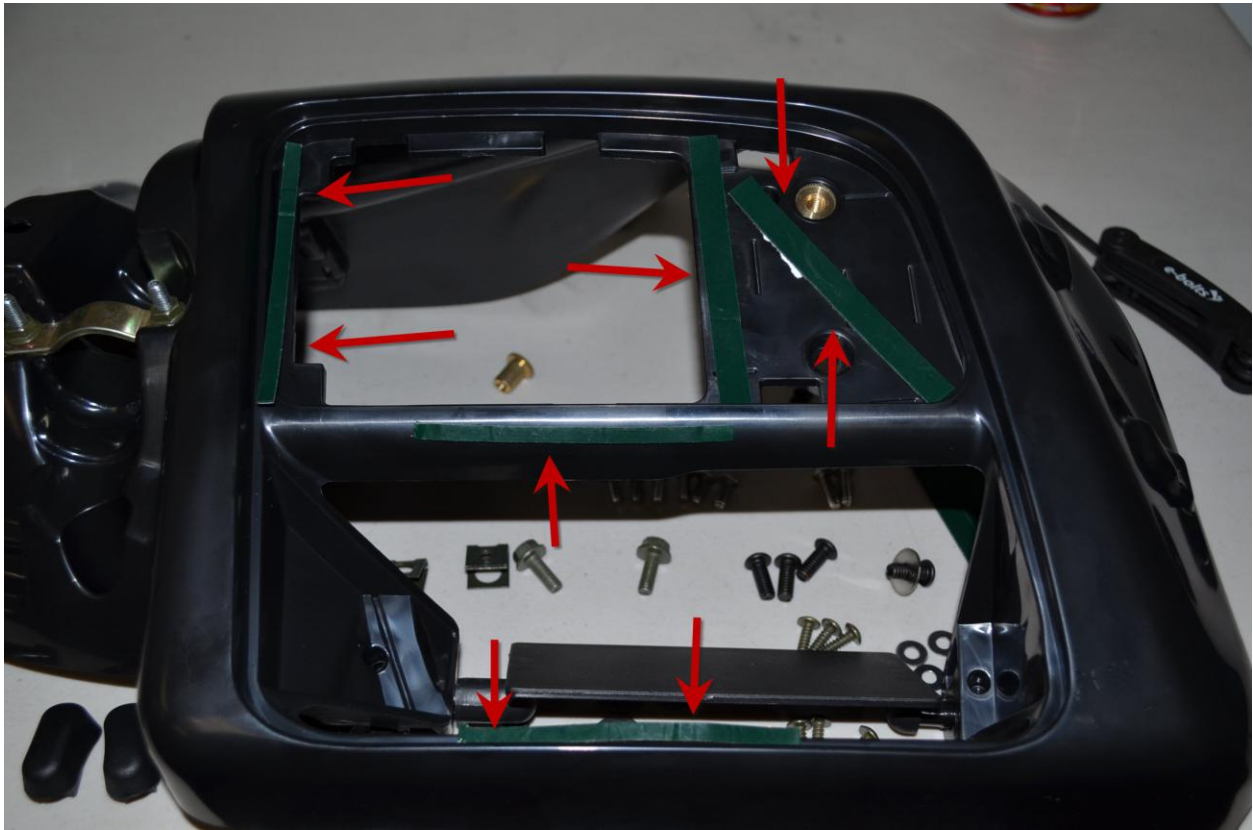
Step 5: While holding the brass insert (25) with one hand, thread in the large Allen head screws (13). Tighten the screw to pull the brass insert into the outer fairing (A1 or A2) until the insert is about 1MM below flush with the surface. Use a large washer (17) to prevent damage to the plastic. **DO NOT OVERTIGHTEN THESE, YOU CAN CRACK THE PLASTIC.**



Step 6: Insert the plastic U-bolt (2) into the outer fairing (A1 or A2). Install the mounting hardware and nuts loosely on the exposed ends of the U-bolt.



Step 7: Apply the adhesive strips (4) to the front of the outer fairing. Do not apply the adhesive strips to areas that will be visible after the front bezel is installed.



Step 8: Install the front bezel (D1 or D2) to the corresponding outer fairing (A1 or A2). Once the piece is installed, you will not be able to remove this piece.



Step 9: Install the front bezel cover (H1 or H2) onto the fairing assembly (A1 or A2 and D1 or D2) by inserting the three tabs on the bottom into the three slots in the front bezel and push in the top tabs until they lock into place.



Step 10: Install inside panel (C1 or C2) to the corresponding fairing assembly, using the large Allen head screws (13) and large washers (17) into the brass inserts (25).



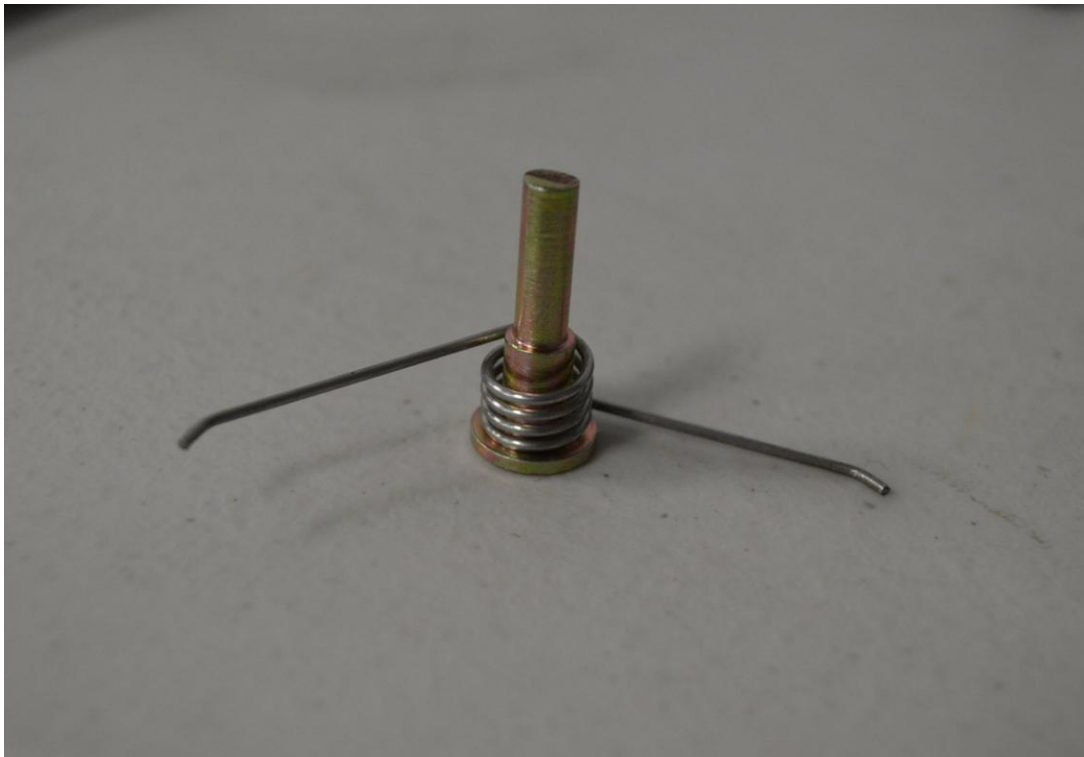
Step 11: Push in the glove box door clips (14) into the glove box surrounds (B1 or B2) and pull the rubber bump stops (5) into the holes next to the clips. Ensure that the clip is in the correct orientation.



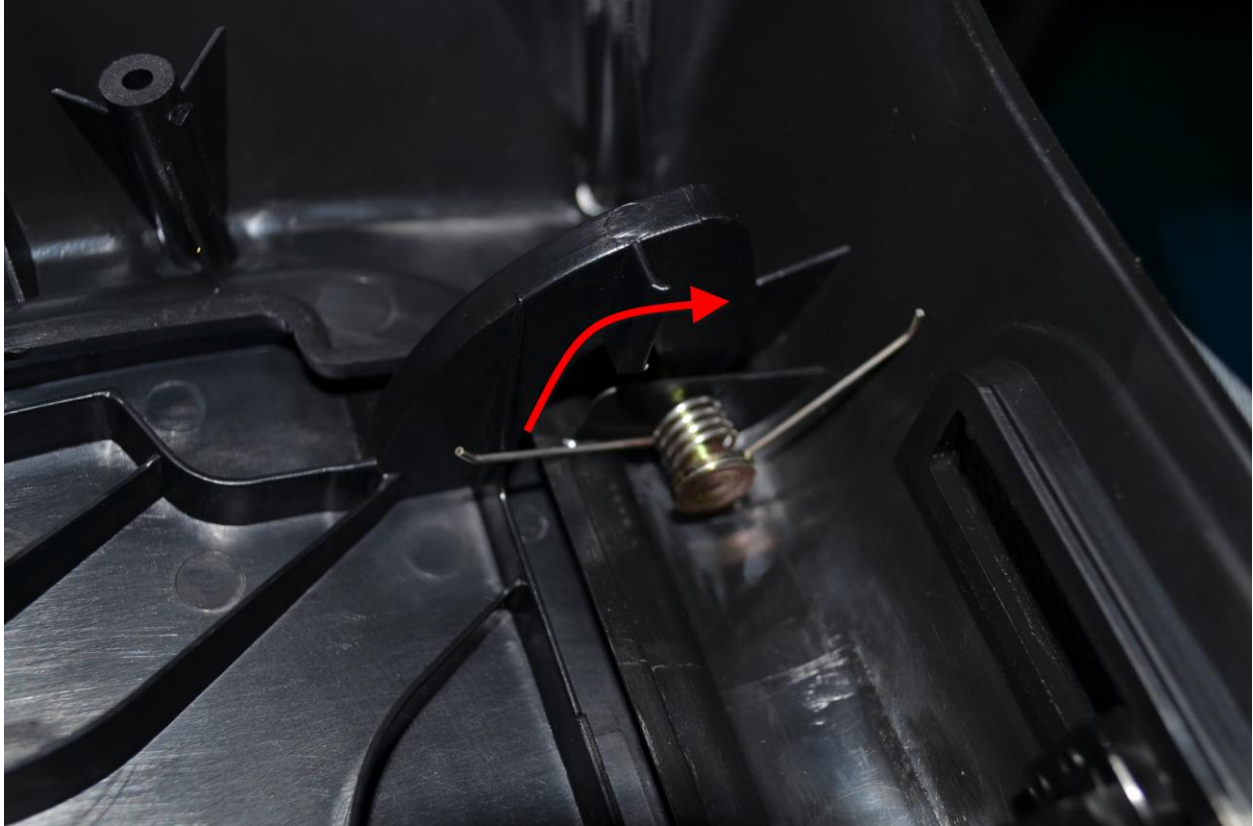
Step 12: Install the glove box door gear (10) onto the tab on the glove box opening surround (B1 or B2)



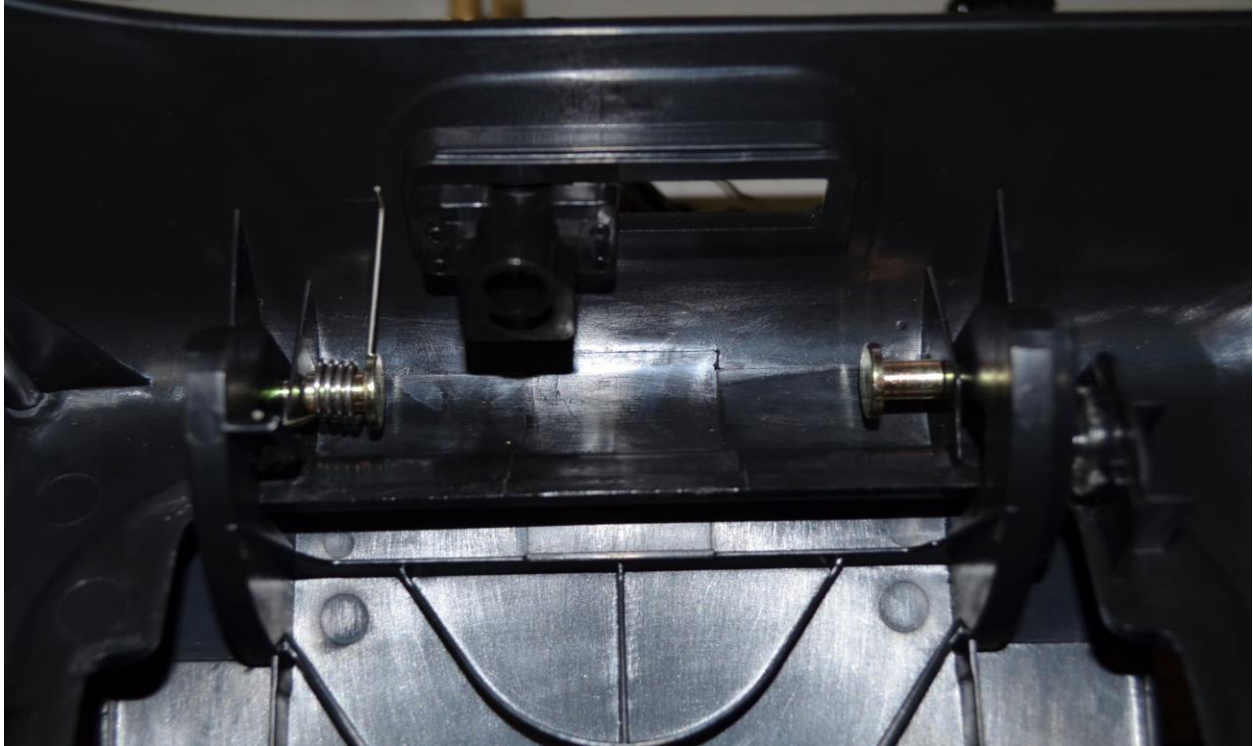
Step 13: Put springs (9) onto two of the glove box door pins (24).



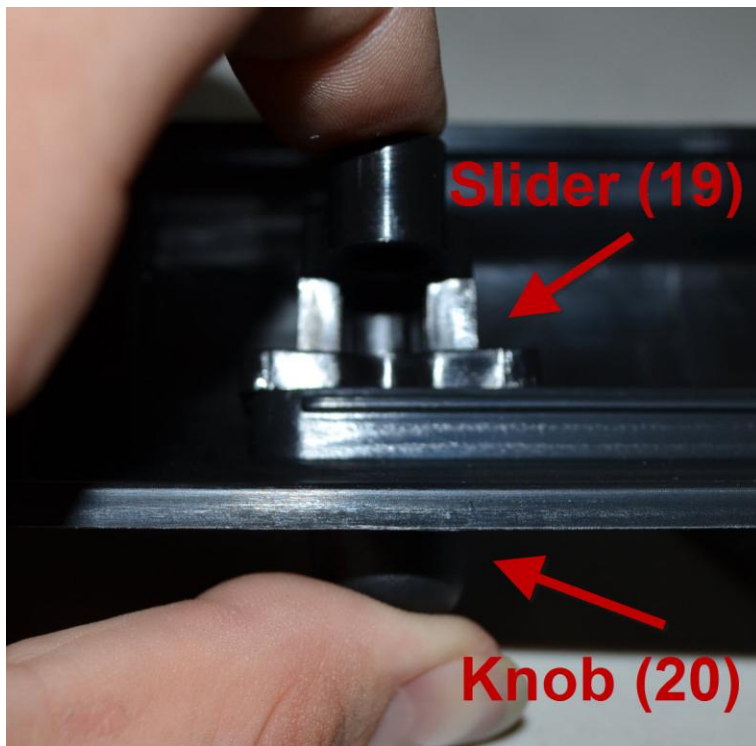
Step 14: Insert the glove box doors (E1 or E2) into the glove box door surrounds (B1 or B2). Keep in mind that the doors do differ slightly from left to right. Make sure the gear (10) meshes with the glove box door properly. Insert glove box door pin with spring installed (24 and 9) through the glove box surround and door (B1 or B2 and E1 or E2), and pull the spring back to rest on the tab in the glove box door.



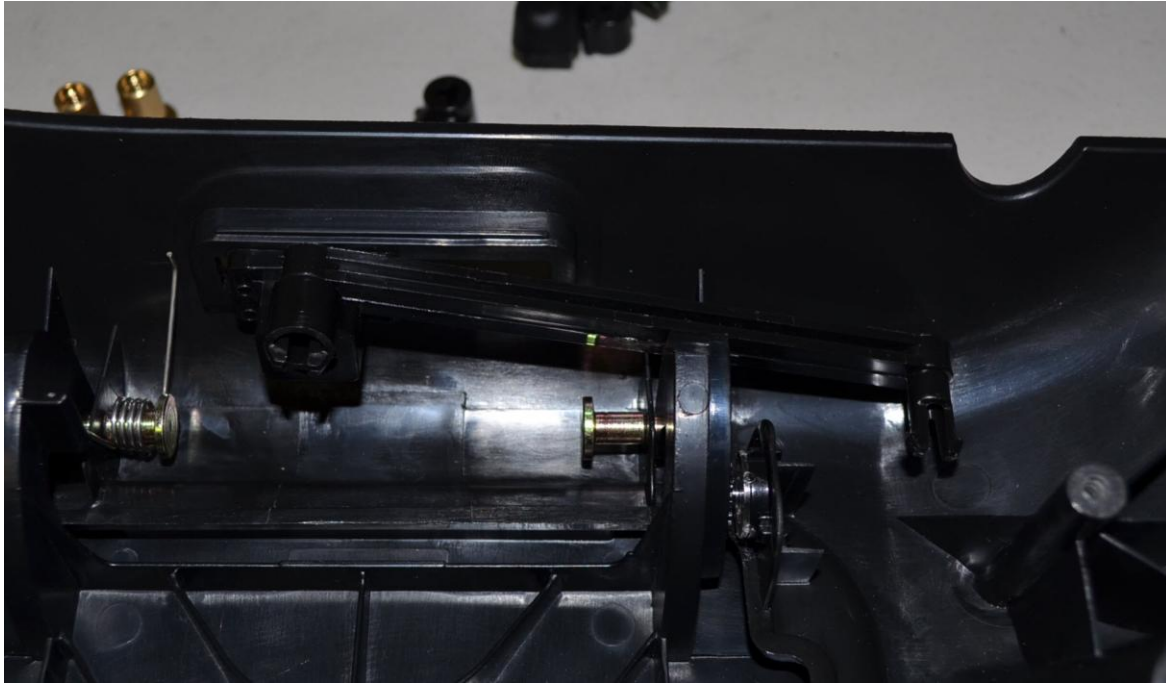
Step 15: Install other glove box pin (24) into other side, through the tab on the glove box surround and the glove box door (B1 and B2 or E1 and E2)



Step 16: Assemble vent lever sliders and vent lever knobs (19 and 20) onto the glove box surrounds (B1 or B2) using the T25 Torx head screws (7)



Step 17: Install vent linkage (23) onto vent lever slider (19)



Step 18: Install inner glove box (F1 or F2) onto the glove box surround (B1 or B2) using three Phillips head self tapping screws (16)



Step 19: Clip vent linkage (23) into the assembled vent door arm and actuator rod (18 and 21)



Step 20: Assemble glove box surround and glove box door (B1 or B2 and E1 or E2) to the outer fairing assembly (A1 or A2) using three short Allen head screws (6) and small washers (15)



This concludes the assembly off the bike for your lower vented fairings. To mount these to your bike, remove the two 10MM nuts and mounting bracket (26), install the lower vented fairing, then replace the mounting bracket and two 10MM nuts (26) and tighten them down.

Install the speednuts (11) onto the fairing caps (G1 and G2). You may need to squeeze the speed nuts slightly to ensure that they do not slip off of the tab on the fairing cap.



Working through the open glove box, install the 10MM bolts (12) into the speed nuts (11) to attach your fairing caps.



We recommend doing one side at a time. Your assembled item should look like this.



We hope that these instructions were helpful and that your lower vented fairings are now fully assembled.

If you have any questions, concerns, or comments, please contact us.

We can be reached by phone at 949-478-4897 or by email at CaliBikerClub@gmail.com

Enjoy The Ride...