



INSTRUCTIONS

-J01185

REV. 1-16-98

Kit Number 43684-98

SOFTAIL WIDE TIRE KIT

General

This kit fits 1997 and later FXSTC, FXSTS, FXSTSB, FLSTC, and FLSTF models. See Service Parts illustration for kit contents.

NOTE

We recommend this kit be installed by a factory-trained technician at an authorized Harley-Davidson Dealership.

WARNING

Rider safety depends on the correct installation of this kit. Follow the procedures in the appropriate Service Manual. If the procedures are not within your capabilities, or if you do not have the correct tools, have your Harley-Davidson dealer perform the installation. Improper installation could cause loss of control and personal injury.

Installation

Overview of Kit Installation

This kit allows the installation of a wider-than-original rear tire (included) on Softail model motorcycles. All parts included in this kit install in the same way as original equipment parts.

Special Tools Required

- Harley-Davidson Service Manual for your model and year motorcycle
- Air impact wrench
- Primary drive locking tool (HD-41214)
- Torque wrench
- Dial caliper
- Tire changing equipment including a wheel truing/balancing stand or wheel spinner (only required if installing tire on wheel)

Also Required

- Loctite 262 (red)
- Primary chaincase lubricant (HD-99887-84 (quart) HD-99886-84 (gallon)).

NOTE

See applicable Service Manual for detailed disassembly procedures summarized below. A Service Manual for your motorcycle is available from your Harley-Davidson Dealer.

WARNING

Do not attempt to install this kit without an appropriate Service Manual which provides detailed instructions for the steps summarized below, illustrations, safety information, and critical specifications. Failure to follow Service Manual procedures could result in personal injury.

1. Raise rear of motorcycle high enough to permit wheel removal. Support motorcycle with suitable blocking underneath frame and remove wheel.
2. Remove sprocket from wheel.
3. Drain primary chaincase lubricant.
4. Remove primary chaincase cover.
5. Remove primary chain, clutch, engine compensating sprocket, and chain adjuster as an assembly.
6. Remove starter jackshaft and starter.
7. Remove primary chaincase and discard the crankcase lip O-ring.
8. Remove pivot bolts that are threaded into each end of the swing axis tube. Remove swing axis tube.
9. Remove the drive belt from the transmission sprocket.
10. Place new drive belt from kit over transmission sprocket.
11. Install swing axis tube and shock absorber bolts.
12. Install primary chaincase using crankcase lip O-ring from kit.
13. Install starter.
14. Install jackshaft.
15. Install the primary chain, clutch, engine compensating sprocket, and chain adjuster as an assembly.
16. Perform sprocket alignment.
17. Install chaincase cover.
18. Adjust clutch and primary chain tension.
19. Refill chaincase with lubricant.
20. Install kit tire and kit sprocket on existing wheel. We recommend that this is done at an authorized Harley-Davidson Dealership. Wheel balancing is recommended to improve handling and reduce vibration, especially at high road speeds.
21. Install wheel.
22. Install debris deflector from kit using the button head screws included.
23. Install belt guard from kit using chrome washers and locking acorn nut included.
24. Adjust drive belt tension.
25. On FLSTF and FLSTC models, check that the fender is centered over the new tire. If the fender needs to be repositioned slightly, loosen the fender mounting hardware, center the fender over the tire, then retighten fender mounting hardware.



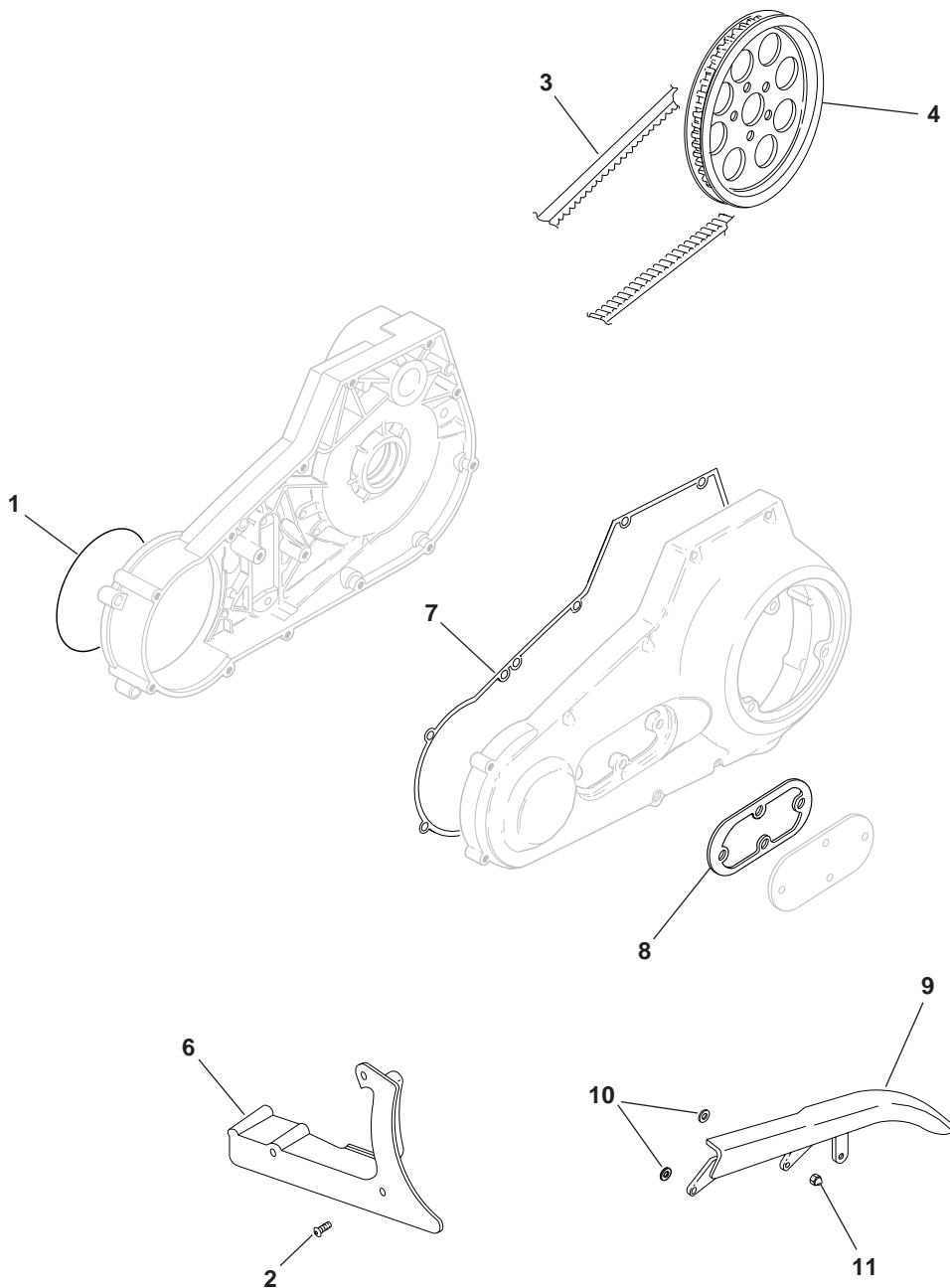
Service Parts

Part No. 43684-98

Date 1-98

Softail Wide Tire Kit

sp43684



Item	Description	Part No.	Item	Description	Part No.
1	O-ring	11147	6	Debris deflector	60389-97A
2	Button head screws (2)	3540	7	Primary cover gasket	60539-94
3	Drive belt, 130 tooth, 1.125 in. wide	40047-98	8	Primary inspection gasket	60567-90A
4	Sprocket, 65-T	40391-98	9	Belt guard	60571-98
5	Tire, 150/80-16, not shown	43043-98	10	Washers (2)	6702
			11	Locking acorn nut	7507