

Tutorial For Creating & Using Routes with Route Converter

Written by Dave Hansen

Route Converter is an EXE file that can be downloaded to your PC & then used to either edit, convert or develop from scratch, routes that can be imported into the Harley-Davidson 6.5GT system or a Garmin/Zumo GPS unit. The program is free and, as a simple EXE file, does not require installation on your PC. The Route Converter download can be found here: <http://www.routeconverter.de/downloads/en>

The initial empty (no data set) screen looks like this (see Figure 1). Note however, that the map area has been zoomed in to show ABC H-D in satellite mode.

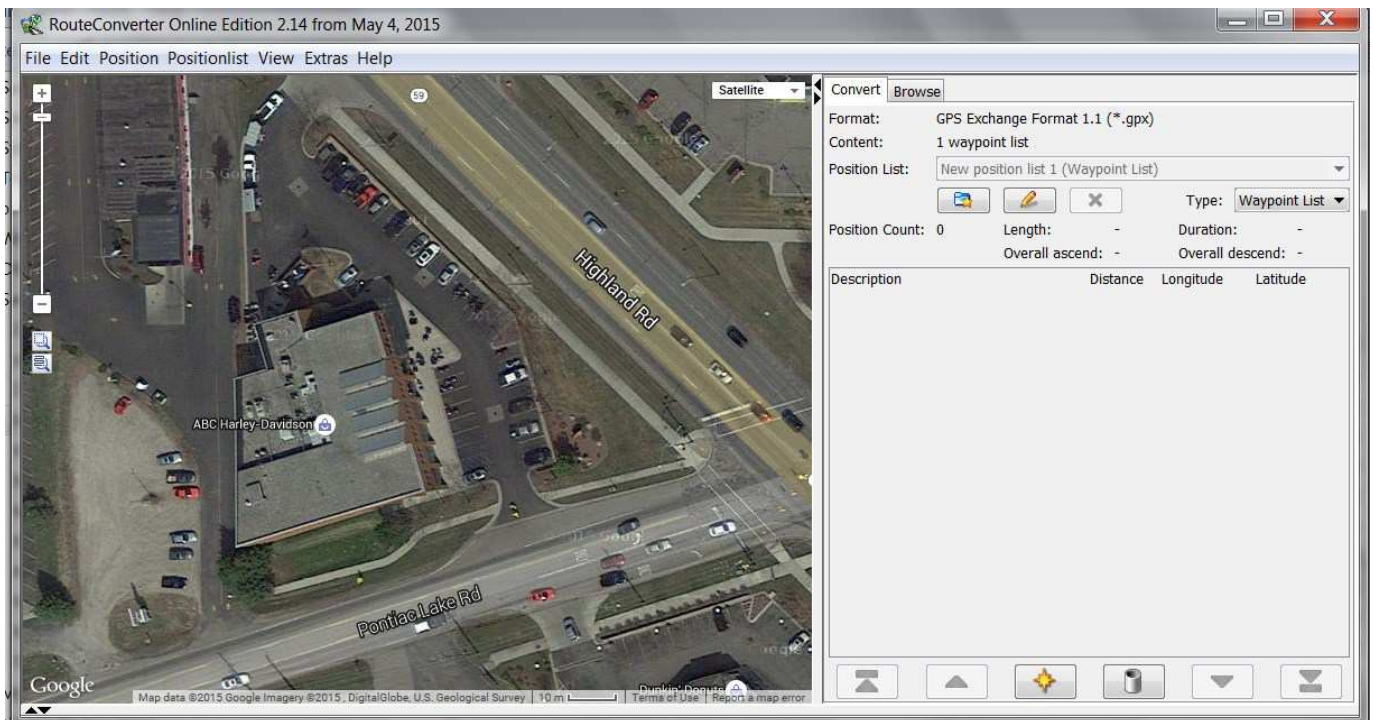


Figure 1

Initial setup for use needs to be done. This includes changing to statute miles by selecting **Extras**, then **Options**, then Display Units as shown in Figure 2. Also set the columns to be displayed in the right side of the display by right-clicking in the column label area, then selecting the columns to be displayed, as shown in Figure 3.

Note also that the data **Type** was changed from **Waypoint List** in Figure 1 to **Route** in Figure 3 using the pull-down menu.

The Position List name is changed/set by selecting the Pencil icon & the typing in the title you want to use to identify your route (see Figure 4).

Tutorial For Creating & Using Routes with Route Converter

Written by Dave Hansen

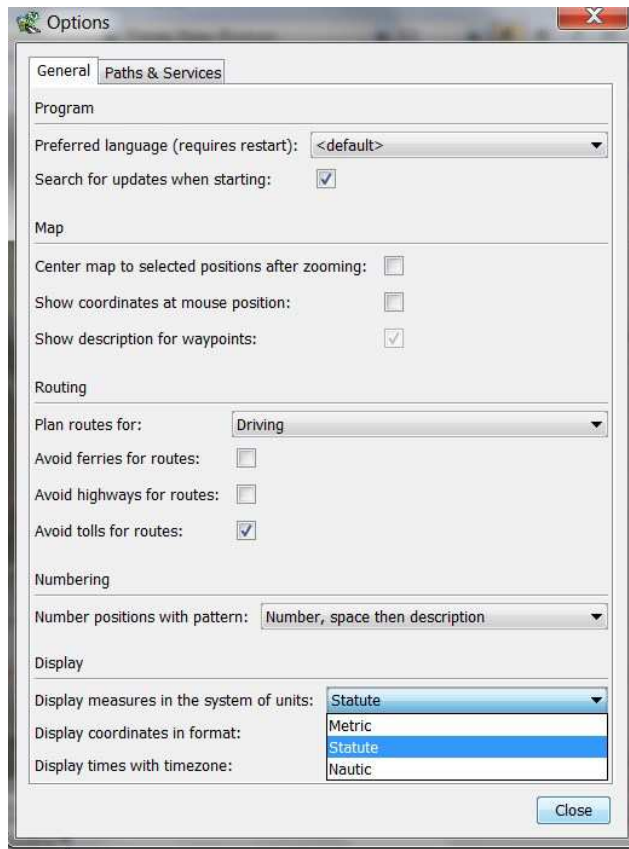


Figure 2

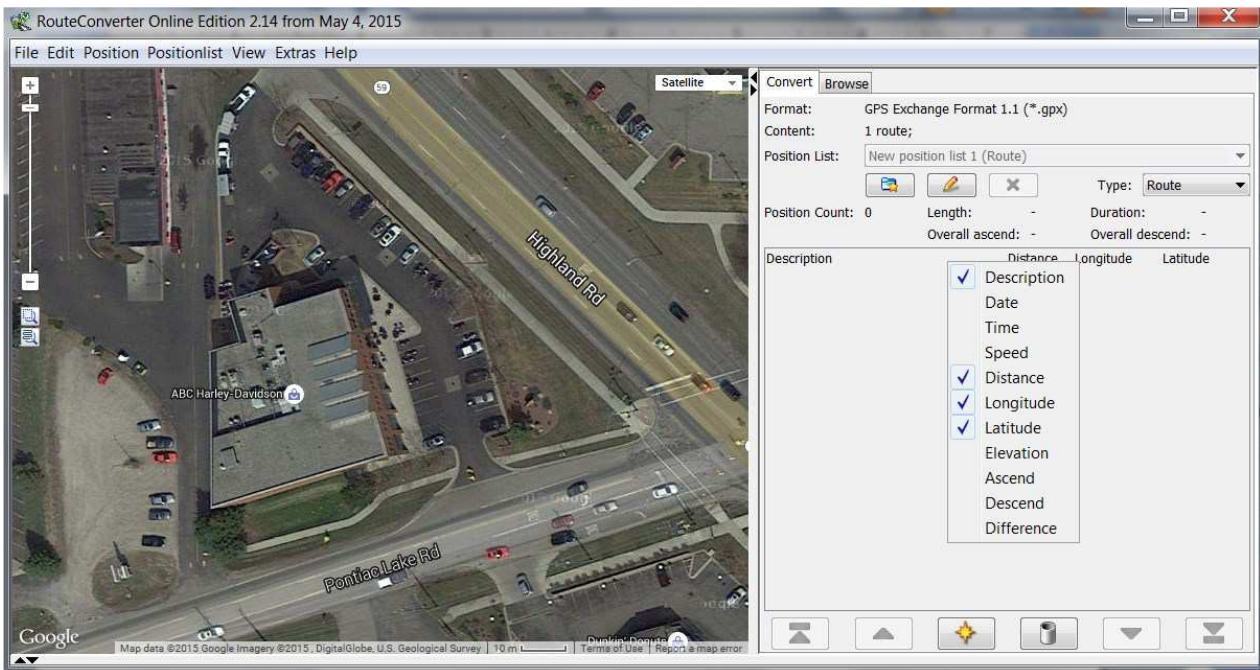


Figure 3

Tutorial For Creating & Using Routes with Route Converter

Written by Dave Hansen

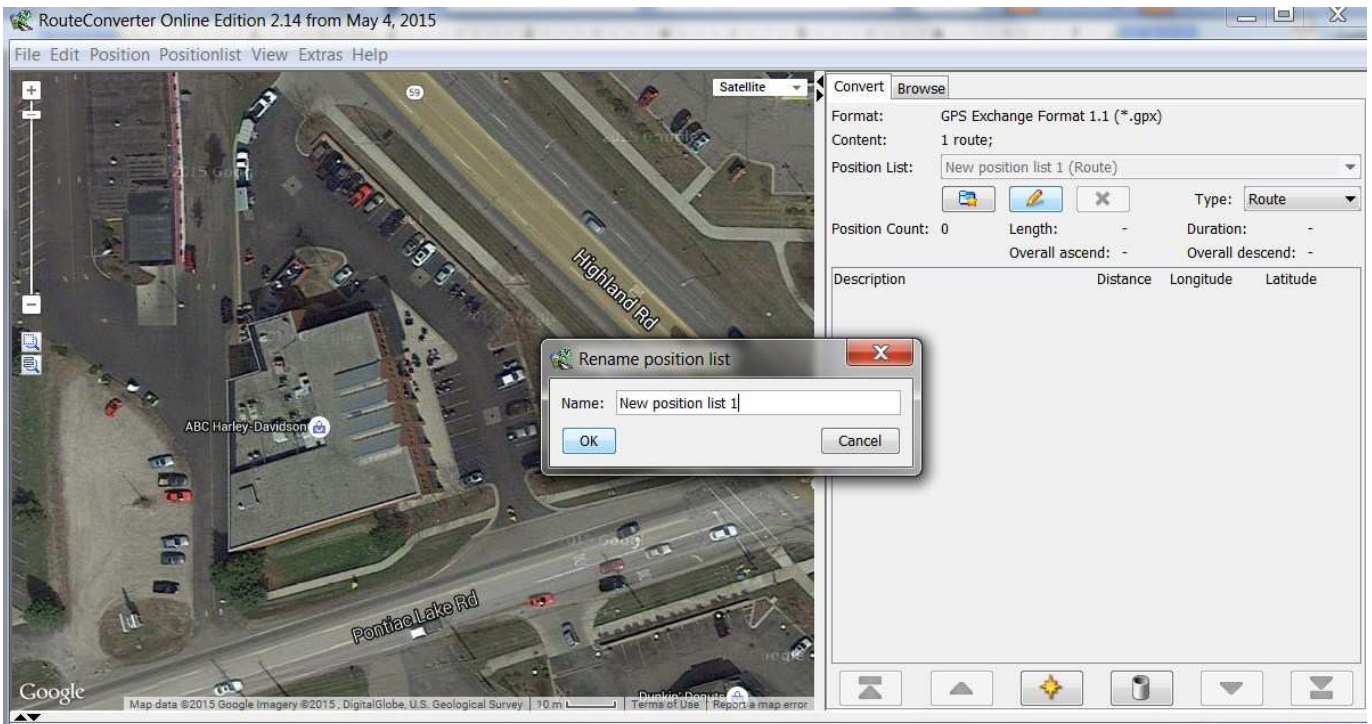


Figure 4

Right clicking on the map brings up a pop-up menu to allow you to Insert a data point, which will appear in the list on the right side of the display (Figures 5 & 6).



Figure 5

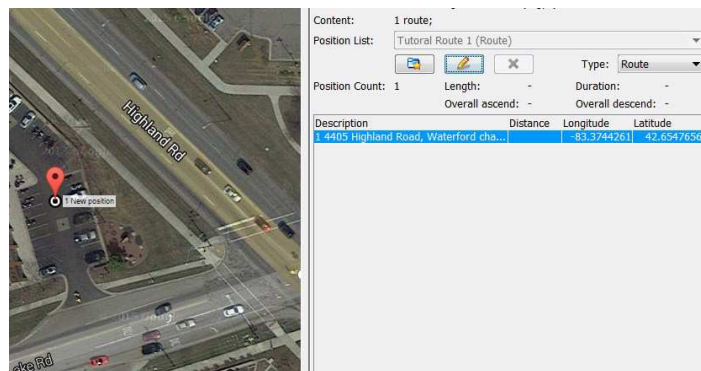


Figure 6

Additional waypoints for your route are added in the same manner. Move to the location on the map where you want to place your next waypoint, then right-click & select Insert. After inserting the second waypoint, the route will also be added to the map display area as shown in Figure 7.

Note here that the additional waypoints should be added as required to allow the routing to select the shortest route between waypoints. This will be important later when importing your route into your GPS unit. Also,

Tutorial For Creating & Using Routes with Route Converter

Written by Dave Hansen

placing waypoints beyond intersections & not *in* intersections will also assist in creating a route within the GPS unit that matches the route created using Route Converter.

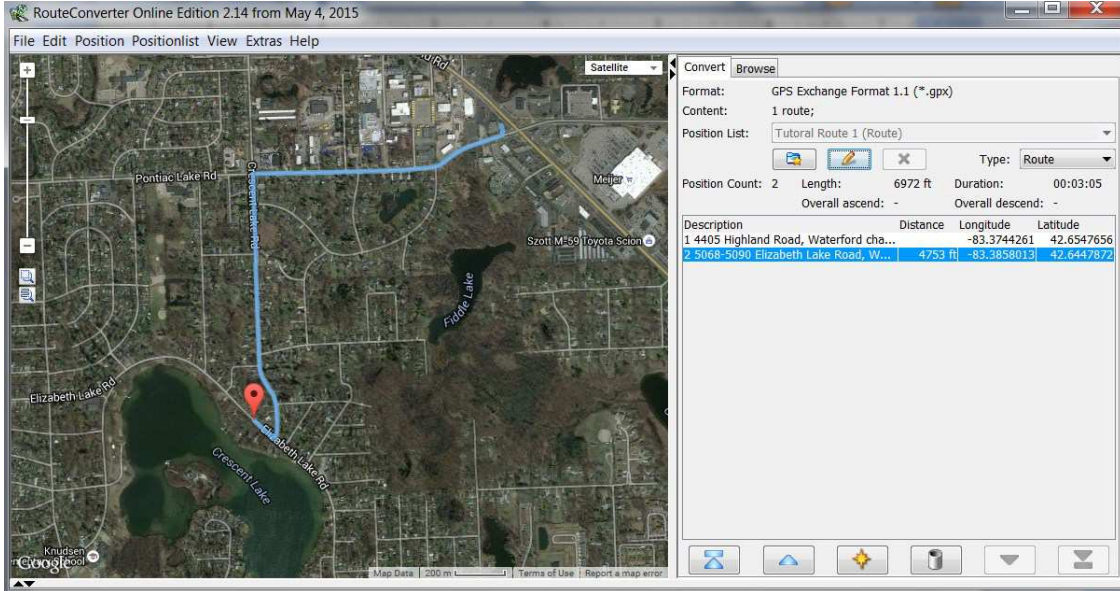


Figure 7

Figure 8 shows the placement of the next waypoint moved the route off the roadway & through a local business (gas station in this example). This is not what we want & will need to be corrected. This can be done by left clicking a position on the route that needs to be moved, then dragging that point back onto the roadway. See Figures 9 & 10.

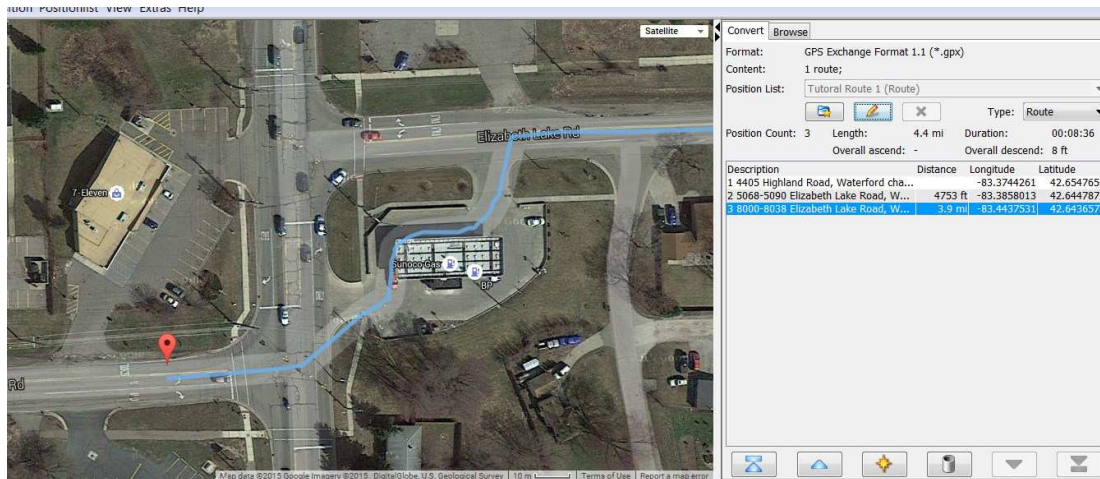


Figure 8

Tutorial For Creating & Using Routes with Route Converter

Written by Dave Hansen

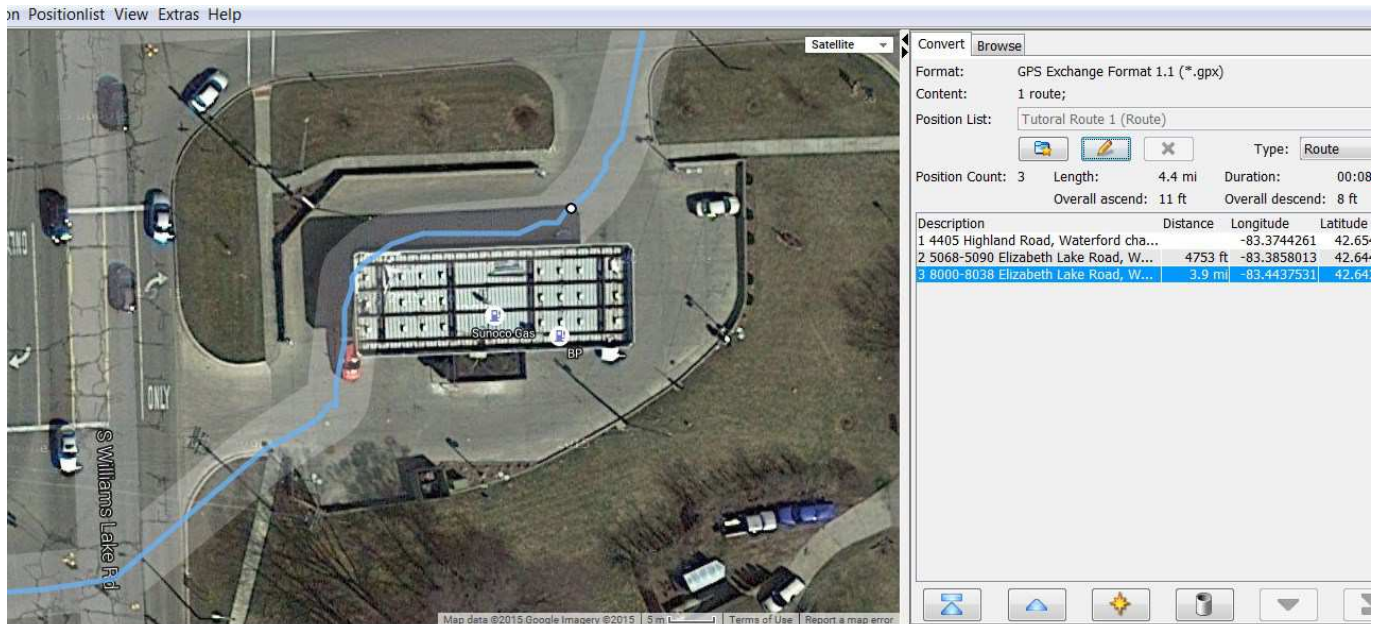


Figure 9 – (see white dot on blue route)

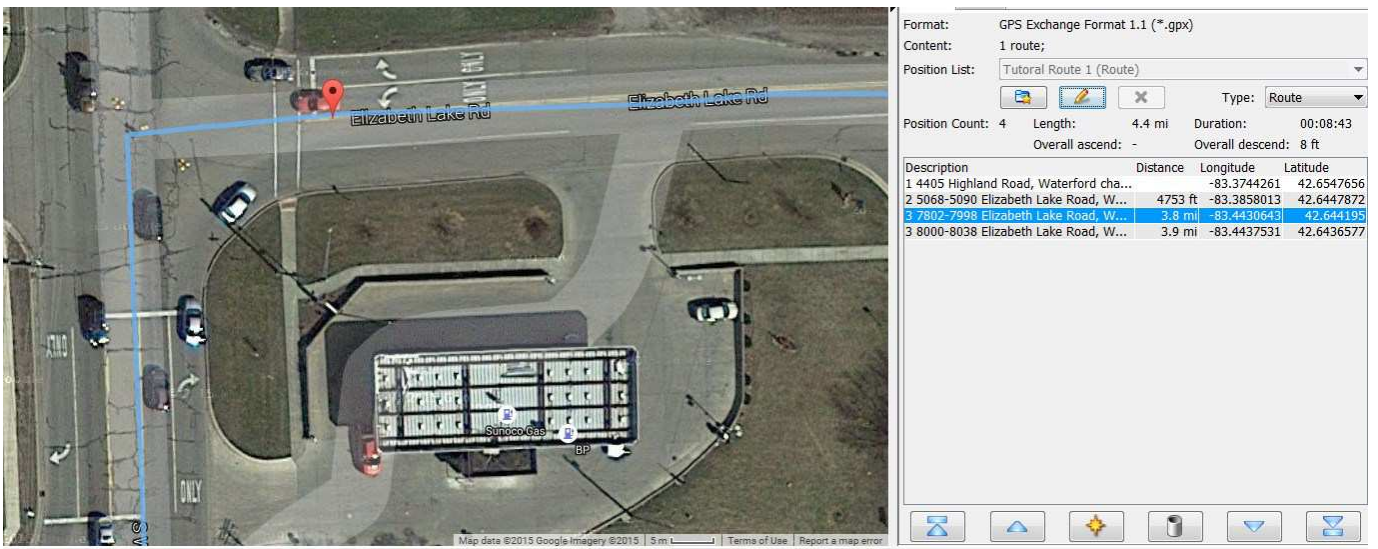


Figure 10 – (see red marker on blue route)

Also note that this route drag correction resulted in a new waypoint being created that is also numbered as point 3. We'll correct the last waypoint (originally created as waypoint 3) to show it's now waypoint 4 by double-clicking on the Description area of that waypoint. This allows us to edit the description name to show it is now waypoint 4.

Tutorial For Creating & Using Routes with Route Converter

Written by Dave Hansen

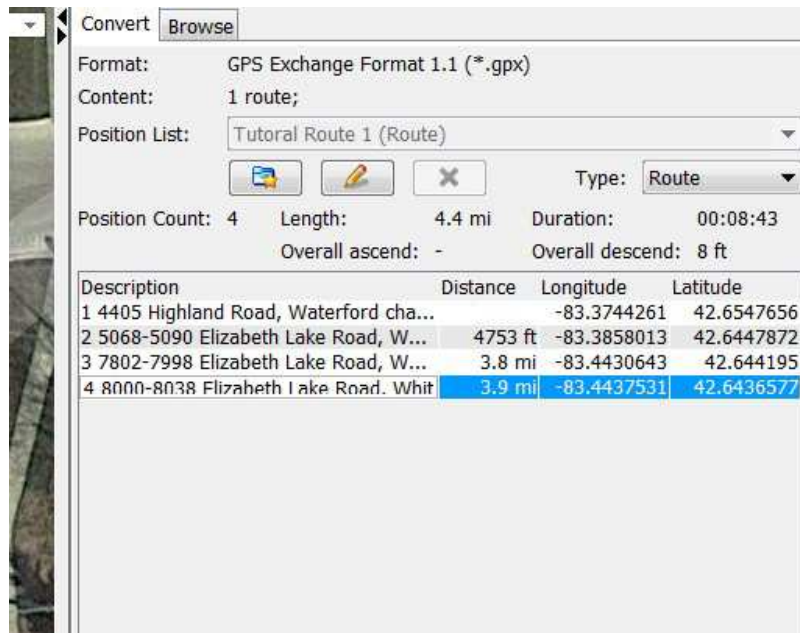


Figure 11

The final destination in this example is Leo's Coney Island in White Lake. Adding that final point & reviewing the route shows this is where we want to go & this is the route we want to follow. We can now save the route using **File, Save As** option (Figure 12). Note the format is GPS Exchange Format 1.1 which uses the GPX file extension.

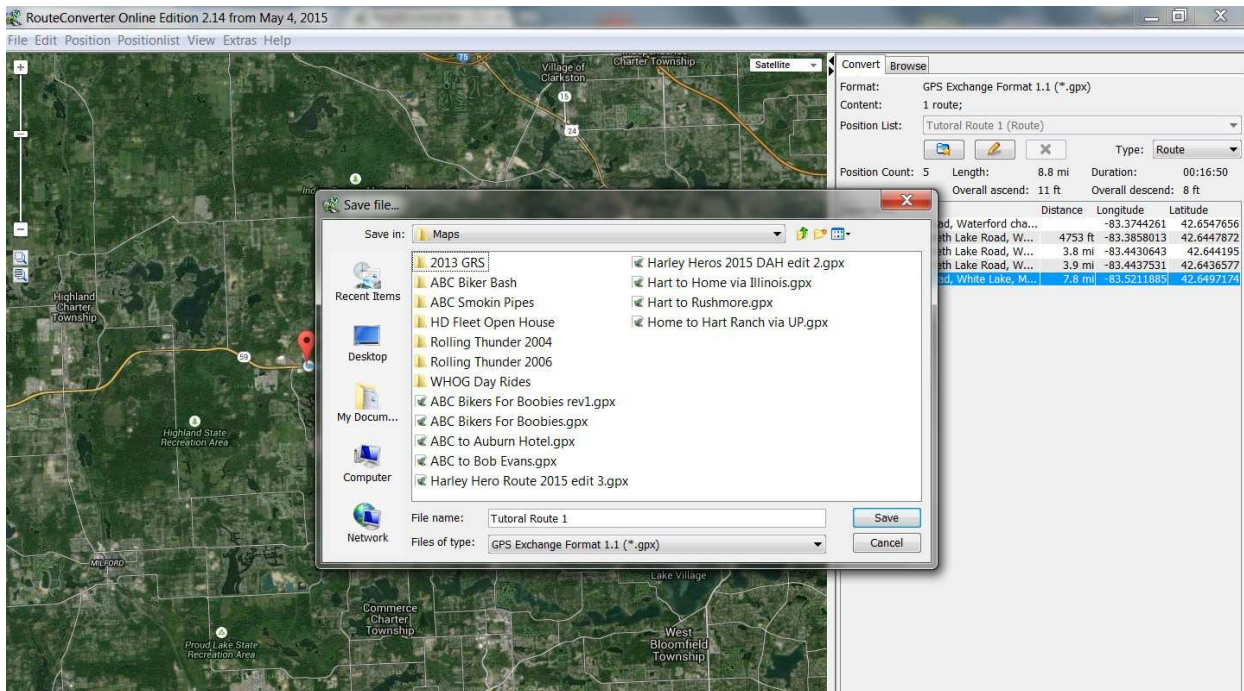


Figure 12

Tutorial For Creating & Using Routes with Route Converter

Written by Dave Hansen

Now that the route has been created, it can be imported into the H-D 6.5GT system by copying the file to the root directory of a USB drive (Figure 13).

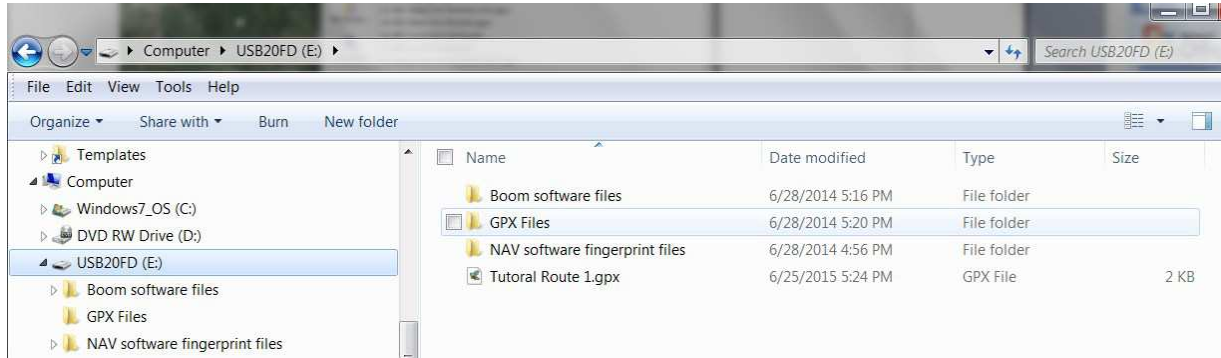


Figure 13

Pages 165 & 166 of the 2015 Infotainment System manual provides step by step instructions on how to import the GPX file you have created & placed on your USB drive.